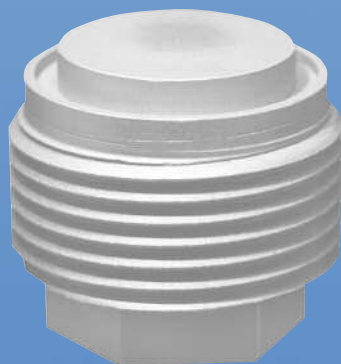


FLUID LEVEL OR DISCRETE DETECTION

**THE NEXT GENERATION OF LIQUID LEVEL SENSORS.
RUGGED SOLID-STATE CONSTRUCTION FEATURING
ITW ACTIVE TOUCH ACTIVESENSE TECHNOLOGY.**

*Packed with Features
other Sensors Can't Match:*

- Contamination / Residue Resistant, Unaffected by Scale or Residue Build-up
- Solid-State, No Moving Parts
- Continuous Sensing
- Diagnostic and Real-time feedback
- Input Options: 5 to 30 VDC
- Output Options: Serial or Digital
- Operating Temperatures*: -40° C to +85° C
- Industry Standards: UL, SAE, NSF, RoHS
- Multi-Level Sensing Capable (*not shown*)
- Probes: Available in Stainless Steel, Aluminum, Glass or Ceramic
- 3-Year Product Warranty



Water Sensor



Water Sensor



Oil Sensor

Applications:

- Food Processing Equipment
- Appliances
- Commercial Food Equipment (Ice Makers, Deep Friers)
- Trucks / Automobiles
- 2- or 4-cycle Engines
- Hot Tubs / Hot Water Tanks
- Marine / Boats / Ships
- Water / Sewage Treatment
- Hydraulic Compressors
- Sump Pumps
- Liquid Dispensing Equipment

* Wider temperature ranges are possible with longer probes or alternate materials.

U.S. Patents: 6933932, 7026943, 7053529, 7106310.
U.S. Patents Pending: 03797865.7, 04776790.0, 04776791.8, 02761841.2, 02763786.7, 04754763.4

800.544.3354

www.itwactivetouch.com